

గ్రామ పంచాయతీ సెక్రటరీ వారి ప్రొసీడింగ్స్

ప్రస్తుతము :- N. Venkataswamy.

పం. యల్. ఆర్. నెం. 11/2000-2001 డి. యస్. నెం. తేదీ 20/10/2000

విషయము : భవన నిర్మాణము _____

గ్రామ పంచాయతీ Pratirpadu

Ground Floor Building భవన నిర్మాణము

శ్రీ Shri Gowdanna Bandha Mission Educational Society తరఫున
మంజూరు చేయడమైనది.

సూచిక : 1 _____ తేదీ గల
అప్పి కేషను

2] 16/9/2000 తేదీ -- 47 _____ రు పంచాయతీ తీర్మానం

ఉత్తర్వులు :

1964 ఆంధ్రప్రదేశ్ గ్రామ పంచాయతీ చట్టమునందలి సెక్షను 217 (2) క్లాజు క్రింద ది. 31-6-65
తేదీగల జి.ఓ.యం.యస్.నెం. 648 G.O.M.S. No. 377 P.R. D. / 12-10-67 మరియు నందలి బిల్డింగు రూల్సుకు
మరియు ఈ క్రింది షరతులకు లోబడి Pratirpadu గ్రామ పంచాయతీ
నందలి Eluru Canal వీధిలోని స్థలములో భవన/పుననిర్మాణ/చేర్పులు మార్పులు చేసుకొనుటకు
ఈ క్రింది షరతులకు లోబడి

శ్రీ Shri Gowdanna Bandha Mission Educational Society
అనుమతి మంజూరు చేయడమైనది.

షరతులు -

1. ఇందులో ఆమోదించి యివ్వబడిన ప్లాను ప్రకారము సెసిఫికేషను ప్రకారము మరియు ది. 31-5-1985 తేదీ గల జి.ఓ.యం.యస్. నెం. 648 G.O.M.S. No. 377 / P.R. No. _____ D/ మరియు పంచాయతీరాజ్ నందలి బిల్డింగురూల్సునకు లోబడి భవన నిర్మాణ/పుననిర్మాణ/వృద్ధి చేర్పులు మార్పులు జరుపవలెను.
2. సదరు భవన నిర్మాణము/పుననిర్మాణము ఈ ఆర్డరు పొందిన 12 మాసములలో పూర్తి చేసి అటుల ఫనాచారము ఈ కార్యాలయమునకు వ్రాత పూర్వకముగా తెలియపరచవలెను.
3. ఆమోదించబడిన ప్లాను ఎల్లప్పుడు కట్టడము స్థలమునందు జాగ్రత్తసరచి పంచాయతీ సెక్రటరీ గారికి గాని లేక వారి అనుమతి పొందిన సిబ్బందికిగాని, అవసరమైనపుడల్లా తనిఖీ నిమిత్తం చూపవలెను.
4. కాంపౌండు ఎత్తు రోడ్డు లెవిల్ నకు 2-5 మీటర్లు మించియుండరాదు. గేటు తలుపులు బయడ అనగా రోడ్డువైపున తెరువబడరాదు. గుమ్మంవద్ద, గేటువద్ద పైకప్పు పబ్లిక్ స్థలము లేక వీధిలోనికి చొచ్చుకొని రాకూడదు మరియు సదరు రూఫ్ కుండి వర్షపు నీటిని పబ్లిక్ స్థలములోనికి గాని, రోడ్డుమీదకుగాని, రోడ్డు మార్జినులోనికిగాని రానియ్యరాదు. రోడ్డు జంక్షనువద్ద మూలలందు పరిపడిన స్థలమొ వదలి గోడ అవసరమయినంత వంపుచేసి కట్టవలెను.



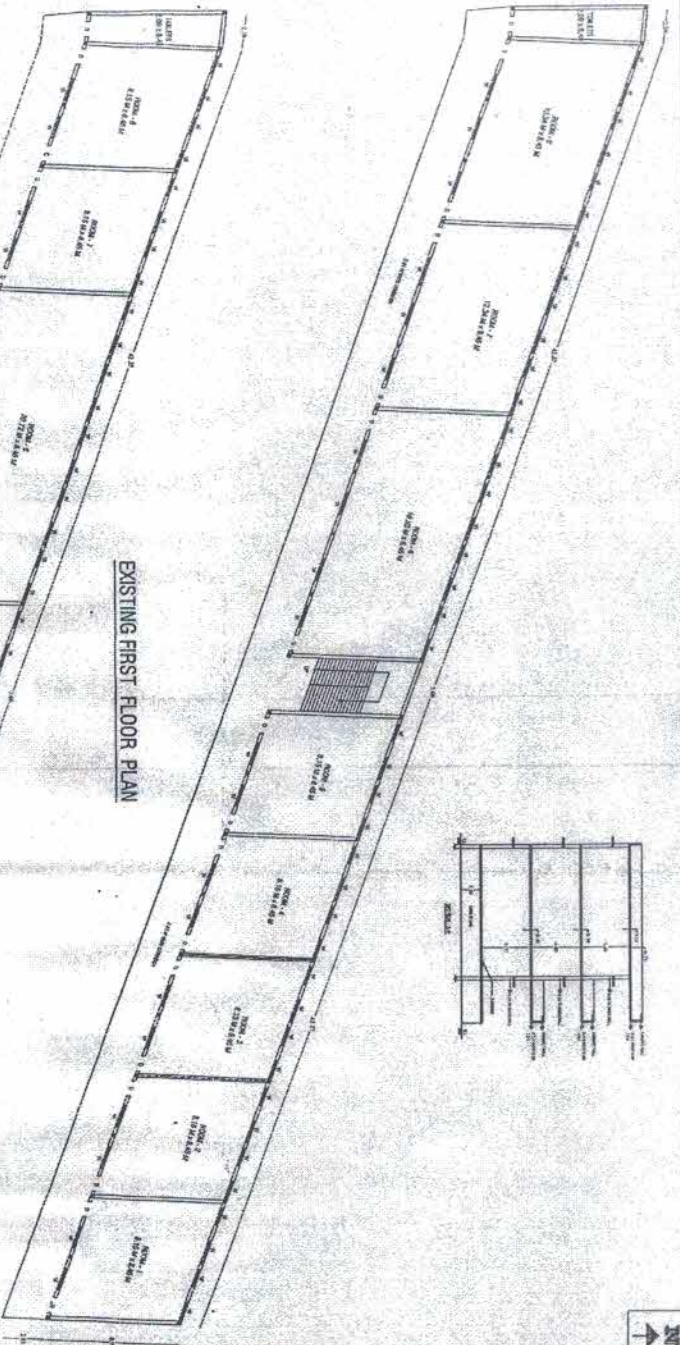
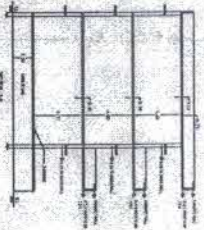
ASR HOMOEOPATHI MEDICAL COLLEGE

PLAN SHOWING THE EXISTING GROUND, FIRST FLOOR BUILDING - BLOCK - 18.

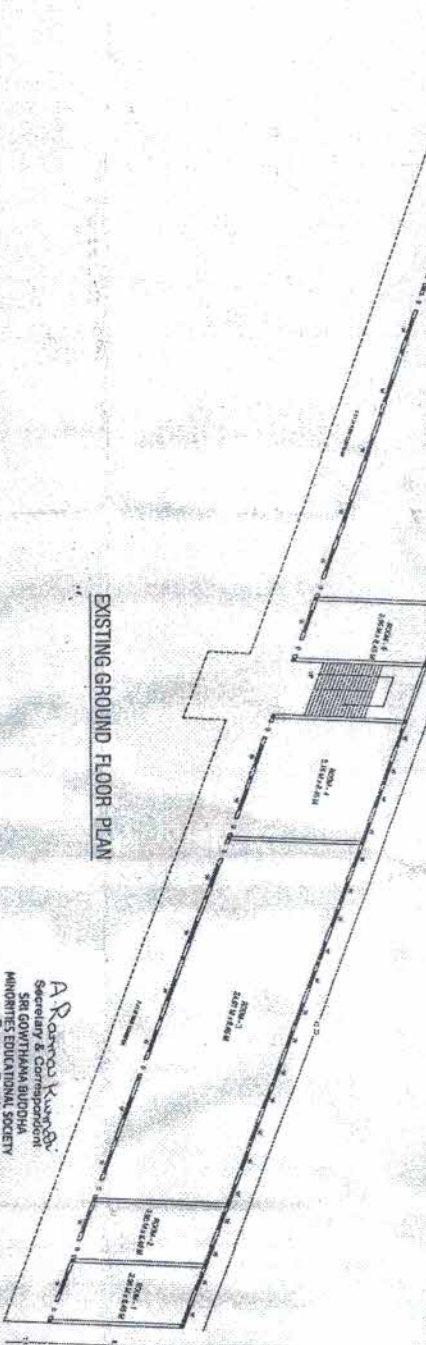
* SRI GOVINDA BUDDHA MINORITON EDUCATIONAL SOCIETY *

IN B.S. NO - 245/L DOOR NO - 7-28 AT PRATHIPADU VILLAGE BRANCHATHAL

PENAPATAPADU MANDAL, W.G.D. A.P.



EXISTING FIRST FLOOR PLAN



EXISTING GROUND FLOOR PLAN

A.R. Ramo Kumar
Secretary & Correspondent
SRI GOVINDA BUDDHA
MINORITON EDUCATIONAL SOCIETY
P. 288, P. 289, P. 290,
TANJAVUR - 534 211, INDIA. (A.P.)

GROUND FLOOR PLAN	
ROOM - 001	POWER ROOM
ROOM - 002	STORE
ROOM - 003	CATERINA
ROOM - 004	LADIES WAITING ROOM
ROOM - 005	TOILETS
ROOM - 006	SEMINAR HALL
ROOM - 007	DEPARTMENT OF ORGANON PHILOSOPHY
ROOM - 008	DEPARTMENT OF MATERIAL MEDICA
ROOM - 009	TOILETS
TOTAL	710.18 Sqm

FIRST FLOOR PLAN	
ROOM - 101	STAFF ROOM
ROOM - 102	DEPARTMENT OF SURGERY
ROOM - 103	DEPARTMENT OF OBG & GYNACOLOGIST
ROOM - 104	DEPARTMENT OF FORENSIC MEDICINE
ROOM - 105	ADMINISTRATIVE ROOM
ROOM - 106	LECTURER HALL - 3
ROOM - 107	DEPARTMENT OF PATHOLOGY
ROOM - 108	READING ROOM
ROOM - 109	TOILETS
TOTAL	710.18 Sqm

AREAS

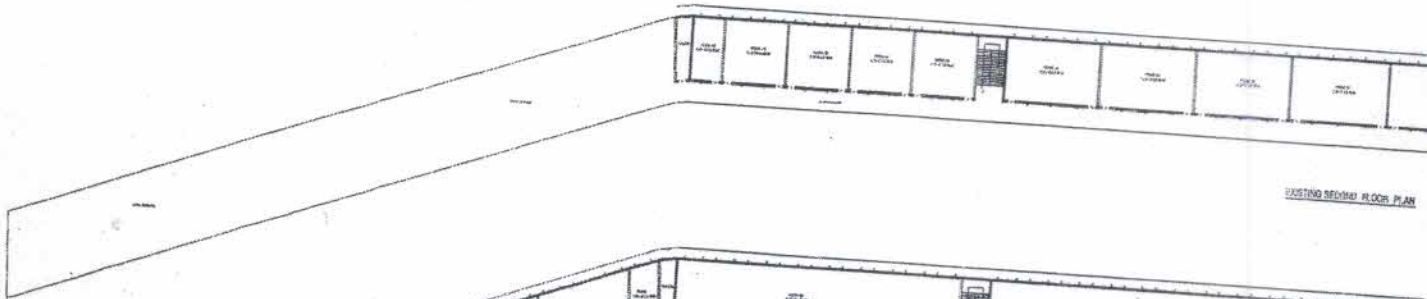
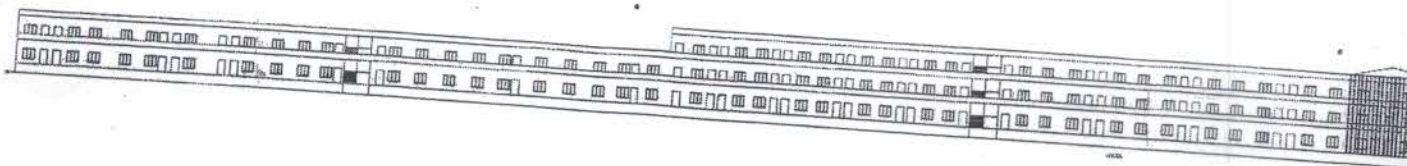
EXISTING GROUND FLOOR AREA :	997.60 Sq.mts
EXISTING FIRST FLOOR AREA :	997.60 Sq.mts
TOTAL FLOOR AREA :	1995.20 Sq.mts

(Signature)
KIRAN K. BALASANI
LICENCED SURVEYOR
TANJAVUR MANDAL
C.No. 98/1782/2007
Sign of LICENCED SURVEYOR

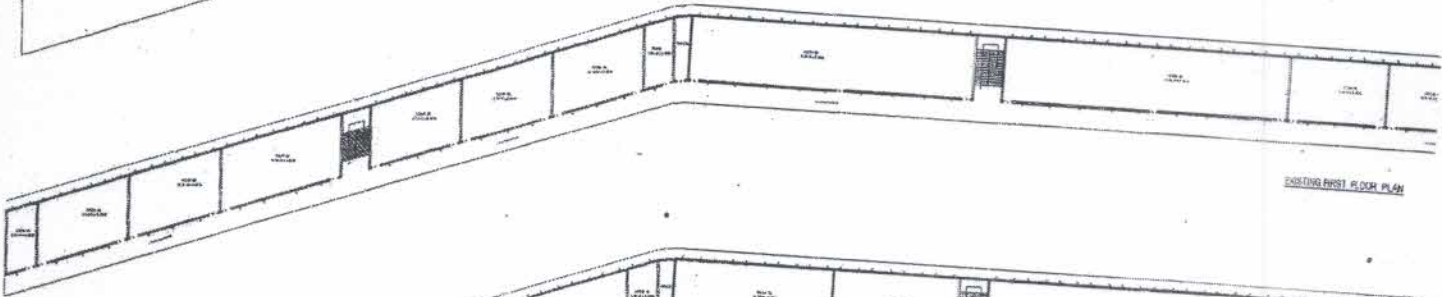
Prepared by
S. ESTHER
LICENCED SURVEYOR
TANJAVUR MANDAL
C.No. 98/1782/2007
Sign of LICENCED SURVEYOR

FOR INFORMATION, DESIGN, CONSTRUCTION & ATTACHED APPROPRIATE REPORTS.
 PLAN SHOWING THE EXISTING CONSTRUCTION OF FACE OF BRIDGEPIERS, SECOND FLOOR BEARING
 AT THE INTERSECTION OF THE BRIDGE AND ROAD 3. ROAD 3. ROAD 3. ROAD 3. ROAD 3. ROAD 3. ROAD 3.
 AT THE INTERSECTION OF THE BRIDGE AND ROAD 3. ROAD 3. ROAD 3. ROAD 3. ROAD 3. ROAD 3.
 APPROVED BY THE GOVERNMENT ENGINEERING DEPARTMENT, TECHNICAL DIVISION, CANTON.

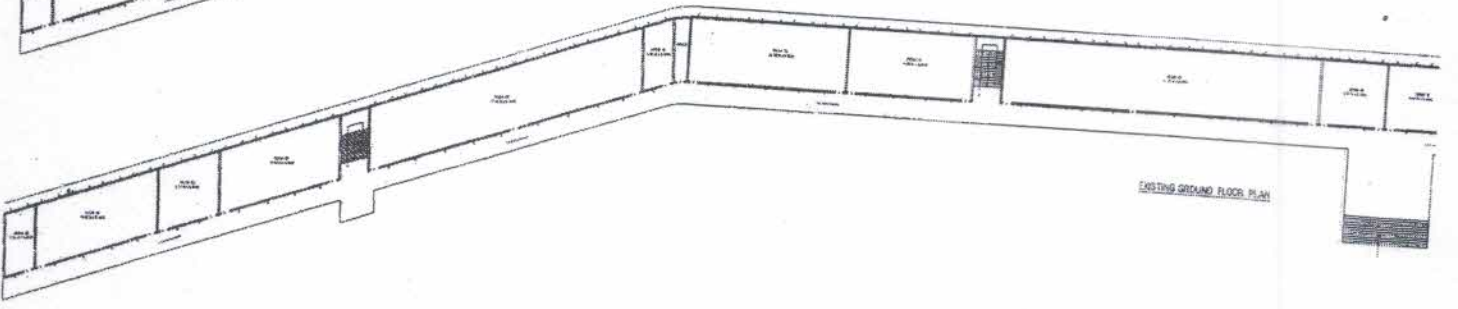
NO.	DATE	REVISION
1	1954	PRELIMINARY
2	1955	REVISED
3	1956	REVISED
4	1957	REVISED
5	1958	REVISED
6	1959	REVISED
7	1960	REVISED
8	1961	REVISED
9	1962	REVISED
10	1963	REVISED
11	1964	REVISED
12	1965	REVISED
13	1966	REVISED
14	1967	REVISED
15	1968	REVISED
16	1969	REVISED
17	1970	REVISED
18	1971	REVISED
19	1972	REVISED
20	1973	REVISED
21	1974	REVISED
22	1975	REVISED
23	1976	REVISED
24	1977	REVISED
25	1978	REVISED
26	1979	REVISED
27	1980	REVISED
28	1981	REVISED
29	1982	REVISED
30	1983	REVISED
31	1984	REVISED
32	1985	REVISED
33	1986	REVISED
34	1987	REVISED
35	1988	REVISED
36	1989	REVISED
37	1990	REVISED
38	1991	REVISED
39	1992	REVISED
40	1993	REVISED
41	1994	REVISED
42	1995	REVISED
43	1996	REVISED
44	1997	REVISED
45	1998	REVISED
46	1999	REVISED
47	2000	REVISED
48	2001	REVISED
49	2002	REVISED
50	2003	REVISED
51	2004	REVISED
52	2005	REVISED
53	2006	REVISED
54	2007	REVISED
55	2008	REVISED
56	2009	REVISED
57	2010	REVISED
58	2011	REVISED
59	2012	REVISED
60	2013	REVISED
61	2014	REVISED
62	2015	REVISED
63	2016	REVISED
64	2017	REVISED
65	2018	REVISED
66	2019	REVISED
67	2020	REVISED
68	2021	REVISED
69	2022	REVISED
70	2023	REVISED
71	2024	REVISED
72	2025	REVISED
73	2026	REVISED
74	2027	REVISED
75	2028	REVISED
76	2029	REVISED
77	2030	REVISED
78	2031	REVISED
79	2032	REVISED
80	2033	REVISED
81	2034	REVISED
82	2035	REVISED
83	2036	REVISED
84	2037	REVISED
85	2038	REVISED
86	2039	REVISED
87	2040	REVISED
88	2041	REVISED
89	2042	REVISED
90	2043	REVISED
91	2044	REVISED
92	2045	REVISED
93	2046	REVISED
94	2047	REVISED
95	2048	REVISED
96	2049	REVISED
97	2050	REVISED
98	2051	REVISED
99	2052	REVISED
100	2053	REVISED
101	2054	REVISED
102	2055	REVISED
103	2056	REVISED
104	2057	REVISED
105	2058	REVISED
106	2059	REVISED
107	2060	REVISED
108	2061	REVISED
109	2062	REVISED
110	2063	REVISED
111	2064	REVISED
112	2065	REVISED
113	2066	REVISED
114	2067	REVISED
115	2068	REVISED
116	2069	REVISED
117	2070	REVISED
118	2071	REVISED
119	2072	REVISED
120	2073	REVISED
121	2074	REVISED
122	2075	REVISED
123	2076	REVISED
124	2077	REVISED
125	2078	REVISED
126	2079	REVISED
127	2080	REVISED
128	2081	REVISED
129	2082	REVISED
130	2083	REVISED
131	2084	REVISED
132	2085	REVISED
133	2086	REVISED
134	2087	REVISED
135	2088	REVISED
136	2089	REVISED
137	2090	REVISED
138	2091	REVISED
139	2092	REVISED
140	2093	REVISED
141	2094	REVISED
142	2095	REVISED
143	2096	REVISED
144	2097	REVISED
145	2098	REVISED
146	2099	REVISED
147	2100	REVISED
148	2101	REVISED
149	2102	REVISED
150	2103	REVISED
151	2104	REVISED
152	2105	REVISED
153	2106	REVISED
154	2107	REVISED
155	2108	REVISED
156	2109	REVISED
157	2110	REVISED
158	2111	REVISED
159	2112	REVISED
160	2113	REVISED
161	2114	REVISED
162	2115	REVISED
163	2116	REVISED
164	2117	REVISED
165	2118	REVISED
166	2119	REVISED
167	2120	REVISED
168	2121	REVISED
169	2122	REVISED
170	2123	REVISED
171	2124	REVISED
172	2125	REVISED
173	2126	REVISED
174	2127	REVISED
175	2128	REVISED
176	2129	REVISED
177	2130	REVISED
178	2131	REVISED
179	2132	REVISED
180	2133	REVISED
181	2134	REVISED
182	2135	REVISED
183	2136	REVISED
184	2137	REVISED
185	2138	REVISED
186	2139	REVISED
187	2140	REVISED
188	2141	REVISED
189	2142	REVISED
190	2143	REVISED
191	2144	REVISED
192	2145	REVISED
193	2146	REVISED
194	2147	REVISED
195	2148	REVISED
196	2149	REVISED
197	2150	REVISED
198	2151	REVISED
199	2152	REVISED
200	2153	REVISED
201	2154	REVISED
202	2155	REVISED
203	2156	REVISED
204	2157	REVISED
205	2158	REVISED
206	2159	REVISED
207	2160	REVISED
208	2161	REVISED
209	2162	REVISED
210	2163	REVISED
211	2164	REVISED
212	2165	REVISED
213	2166	REVISED
214	2167	REVISED
215	2168	REVISED
216	2169	REVISED
217	2170	REVISED
218	2171	REVISED
219	2172	REVISED
220	2173	REVISED
221	2174	REVISED
222	2175	REVISED
223	2176	REVISED
224	2177	REVISED
225	2178	REVISED
226	2179	REVISED
227	2180	REVISED
228	2181	REVISED
229	2182	REVISED
230	2183	REVISED
231	2184	REVISED
232	2185	REVISED
233	2186	REVISED
234	2187	REVISED
235	2188	REVISED
236	2189	REVISED
237	2190	REVISED
238	2191	REVISED
239	2192	REVISED
240	2193	REVISED
241	2194	REVISED
242	2195	REVISED
243	2196	REVISED
244	2197	REVISED
245	2198	REVISED
246	2199	REVISED
247	2200	REVISED
248	2201	REVISED
249	2202	REVISED
250	2203	REVISED
251	2204	REVISED
252	2205	REVISED
253	2206	REVISED
254	2207	REVISED
255	2208	REVISED
256	2209	REVISED
257	2210	REVISED
258	2211	REVISED
259	2212	REVISED
260	2213	REVISED
261	2214	REVISED
262	2215	REVISED
263	2216	REVISED
264	2217	REVISED
265	2218	REVISED
266	2219	REVISED
267	2220	REVISED
268	2221	REVISED
269	2222	REVISED
270	2223	REVISED
271	2224	REVISED
272	2225	REVISED
273	2226	REVISED
274	2227	REVISED
275	2228	REVISED
276	2229	REVISED
277	2230	REVISED
278	2231	REVISED
279	2232	REVISED
280	2233	REVISED
281	2234	REVISED
282	2235	REVISED
283	2236	REVISED
284	2237	REVISED
285	2238	REVISED
286	2239	REVISED
287	2240	REVISED
288	2241	REVISED
289	2242	REVISED
290	2243	REVISED
291	2244	REVISED
292	2245	REVISED
293	2246	REVISED
294	2247	REVISED
295	2248	REVISED
296	2249	REVISED
297	2250	REVISED
298	2251	REVISED
299	2252	REVISED
300	2253	REVISED
301	2254	REVISED
302	2255	REVISED
303	2256	REVISED
304	2257	REVISED
305	2258	REVISED
306	2259	REVISED
307	2260	REVISED
308	2261	REVISED
309	2262	REVISED
310	2263	REVISED
311	2264	REVISED
312	2265	REVISED
313	2266	REVISED
314	2267	REVISED
315	2268	REVISED
316	2269	REVISED
317	2270	REVISED
318	2271	REVISED
319	2272	REVISED
320	2273	REVISED
321	2274	REVISED
322	2275	REVISED
323	2276	REVISED
324	2277	REVISED
325	2278	REVISED
326	2279	REVISED
327	2280	REVISED
328	2281	REVISED
329	2282	REVISED
330	2283	REVISED
331	2284	REVISED
332	2285	REVISED
333	2286	REVISED
334	2287	REVISED
335	2288	REVISED
336	2289	REVISED
337	2290	REVISED
338	2291	REVISED
339	2292	REVISED
340	2293	REVISED
341	2294	REVISED
342	2295	REVISED
343	2296	REVISED
344	2297	REVISED
345	2298	REVISED
346	2299	REVISED
347	2300	REVISED
348	2301	REVISED
349	2302	REVISED
350	2303	REVISED
351	2304	REVISED
352	2305	REVISED
353	2306	REVISED
354	2307	REVISED
355	2308	REVISED
356	2309	REVISED
357	2310	REVISED
358	2311	REVISED
359	2312	REVISED
360	2313	REVISED



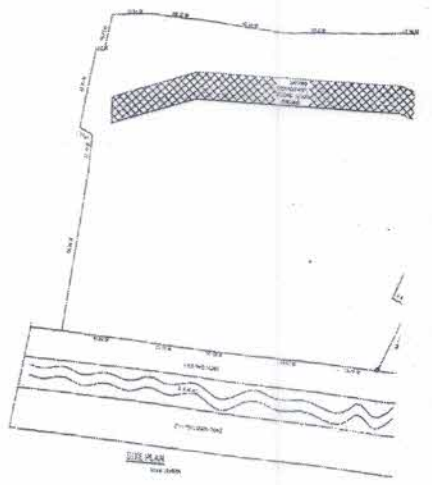
EXISTING SECOND FLOOR PLAN



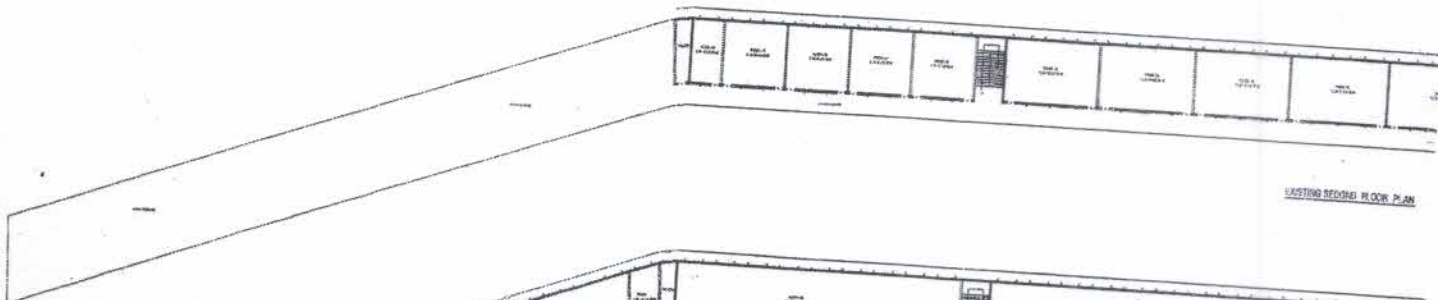
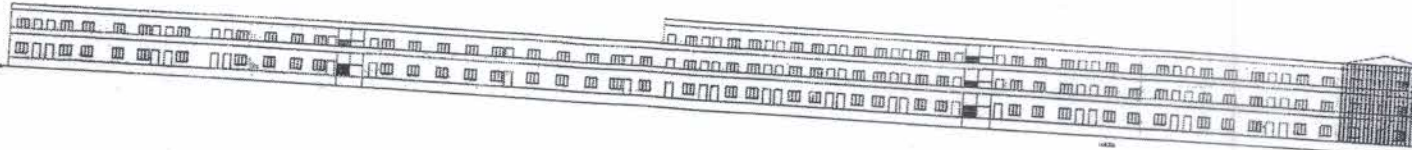
EXISTING FIRST FLOOR PLAN



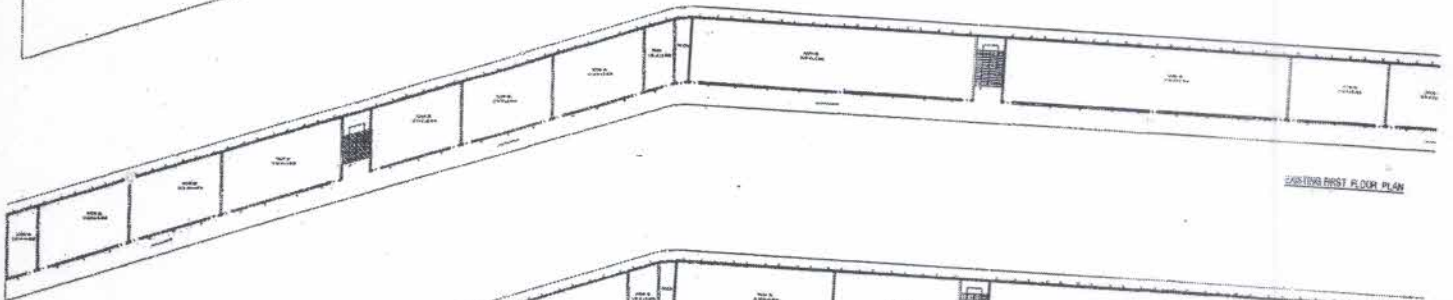
EXISTING GROUND FLOOR PLAN



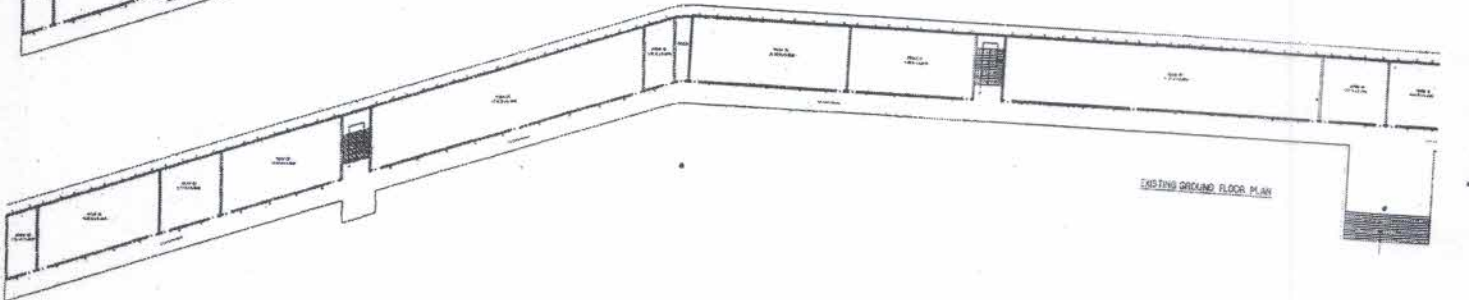
SITE PLAN



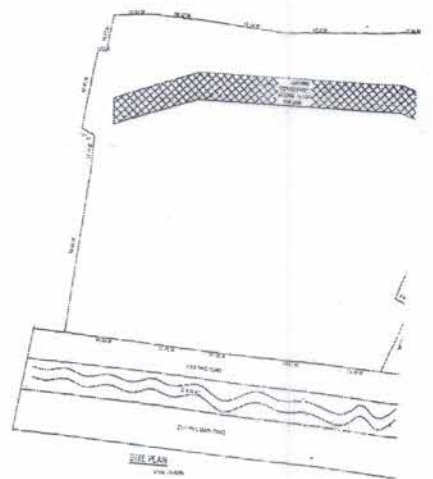
EXISTING SECOND FLOOR PLAN



EXISTING FIRST FLOOR PLAN



EXISTING GROUND FLOOR PLAN



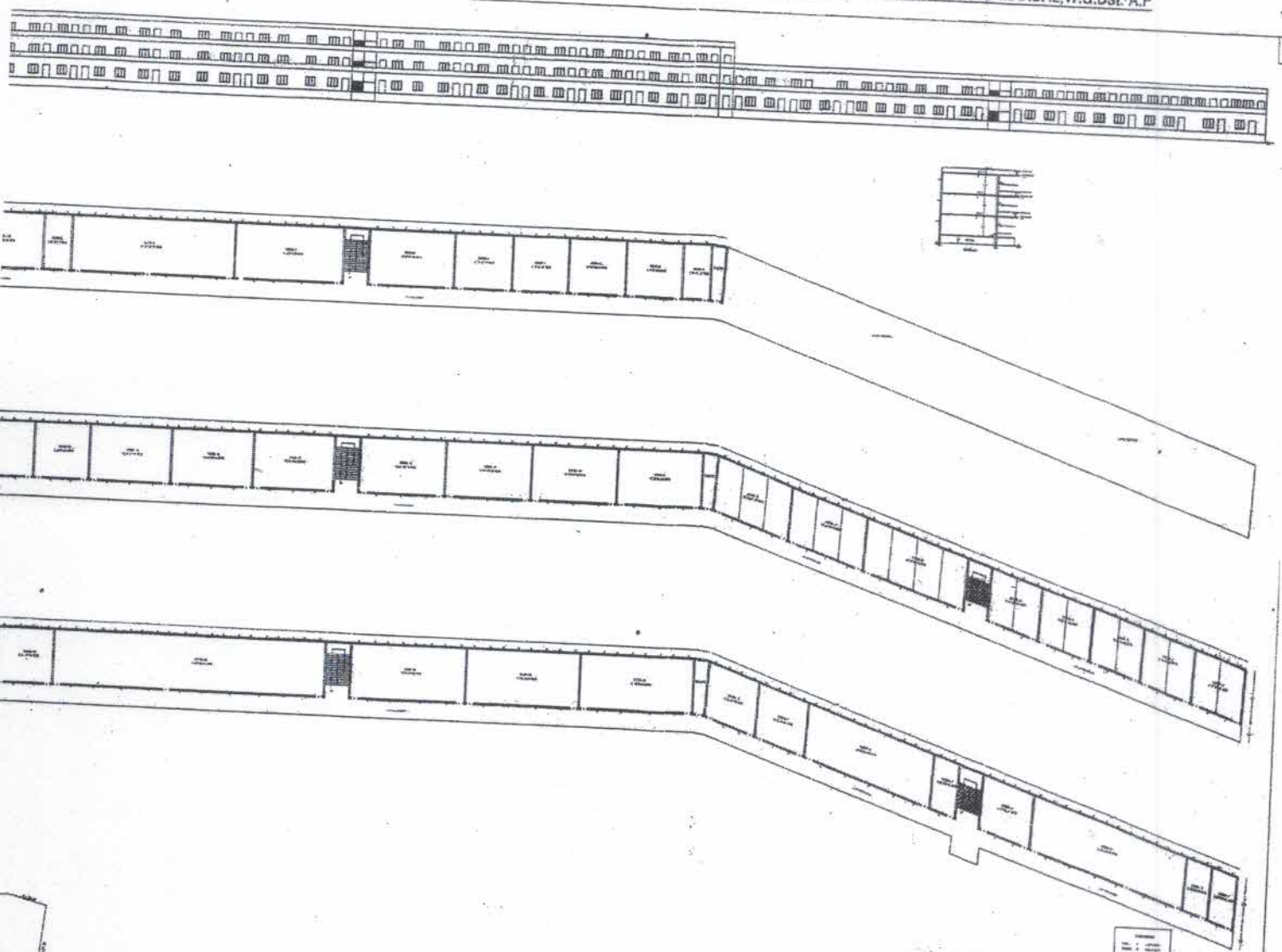
SITE PLAN

PROPOSED SHOWING THE EXISTING GROUND, FIRST, SECOND FLOOR R.C.C. ROOF MULTI STORED BUILDING FOR

"SRI GOWTAMA BUDDHA MINORITY EDUCATIONAL SOCIETY" IN R.S.NO : 244/1,2,3,4,5, & 245/1,2,3

EXTENT OF Ac 10.16 Cents

AT PRATHIPADU VILLAGE & PANCHAYATH, PENATAPADU MANDAL, W.G.Dst. A.P



AREAS

EXISTING GROUND FLOOR AREA : 4464.29 Sq.mts

EXISTING FIRST FLOOR AREA : 4464.29 Sq.mts

EXISTING SECOND FLOOR AREA : 2445.83 Sq.mts

Approval

Permitted as per B.L.R NO 11 / 2000-2001
dated 20.10.2000 as per PRM 47
dated 16.9.2000 of Prathipadu Grampanchayat
Prathipadu Mandal, West Godavari Dist.

A Ramu Kumar
Secretary & Correspondent
SRI GOWTHAMA BUDDHA
MINORITIES EDUCATIONAL SOCIETY
By pass Road,
TANUKU - 534 211, W.G.D. (A.P.)



[Signature]
EXECUTIVE OFFICER
GRAM PANCHAYAT
PRATHIPADU.

PREPARED BY:
S.E.S.T.V. PRASAD
S E S T U M
LICENCED SURVEYOR
TANUKU MUNICIPALITY
Cell. 9947823379

SIGN OF LICENCED SURVEYOR